



KIBA
built

OUR FAMILY BUILDING FOR YOUR FAMILY

FACADE: TRANQUIL **PLAN:** BERMUDA

SIZE: 307.8 SQM

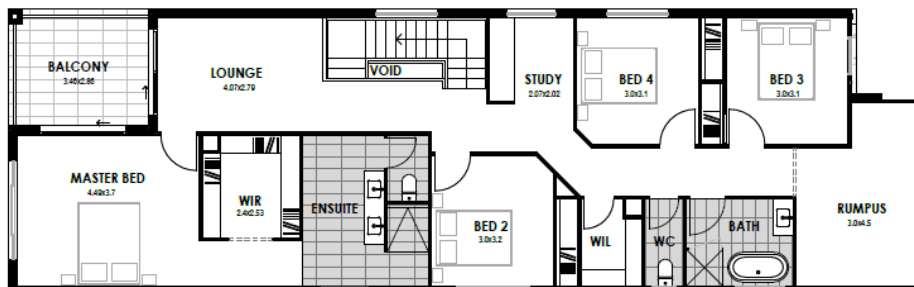
FRONTAGE: 10 M

OPTION 1
FROM: **\$518,000***

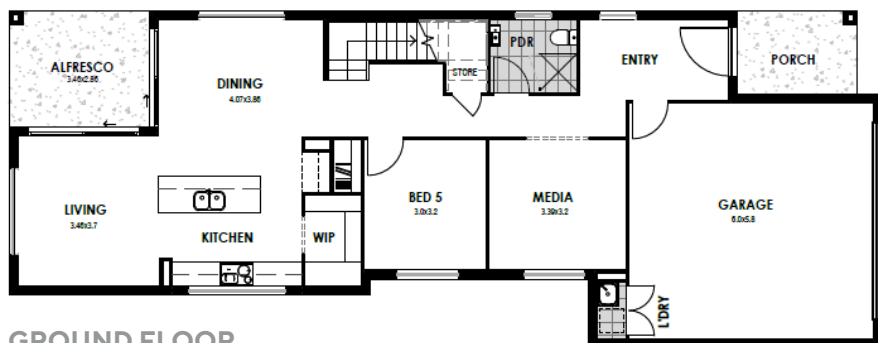
Priced with the 'Traditional' facade

OPTION 2
FROM: **\$540,000***

Priced with 'Tranquil' facade shown



UPPER FLOOR



GROUND FLOOR

INCLUSIONS

- 20mm Stone throughout
- Choice of black or chrome plumbing fixtures
- Free standing bath
- All floor coverings, including alfresco tiles
- Split system airconditioner x 1
- Westinghouse appliances



5

Bedrooms



3

Bathrooms



2

Garage Space



4

Living Areas

This magnificent two-story home stands as a testament to comfort, style, and spaciousness. With five bedrooms, four living rooms, and three bathrooms, the floor plan exudes an aura of luxury and the facade offers tranquility.

CONTACT US



07 3540 7993



INFO@KIBABUILT.COM.AU

Disclaimer: Please be aware that the facade image may showcase enhancements such as landscaping, timber decking, furniture, window treatments, and lighting, which are not provided by Kiba Built or included in the package price. The floorplan serves as a conceptual representation and is subject to potential alterations. It may portray fixtures, fittings, features, finishes, furnishings, vehicles, or other items not included in the house design or package price. The displayed price is based on Kiba Built's local pricing list and excludes additional costs for any requested variations. Additional costs may apply for bushfire, acoustics, wind ratings, easements or additional covenant requirements and retaining walls. Kiba Built reserves the right to withdraw this package at any time without notice. Approval from the Developer and Local Governments is necessary for this plan in your chosen build area.

QBCC 15100054