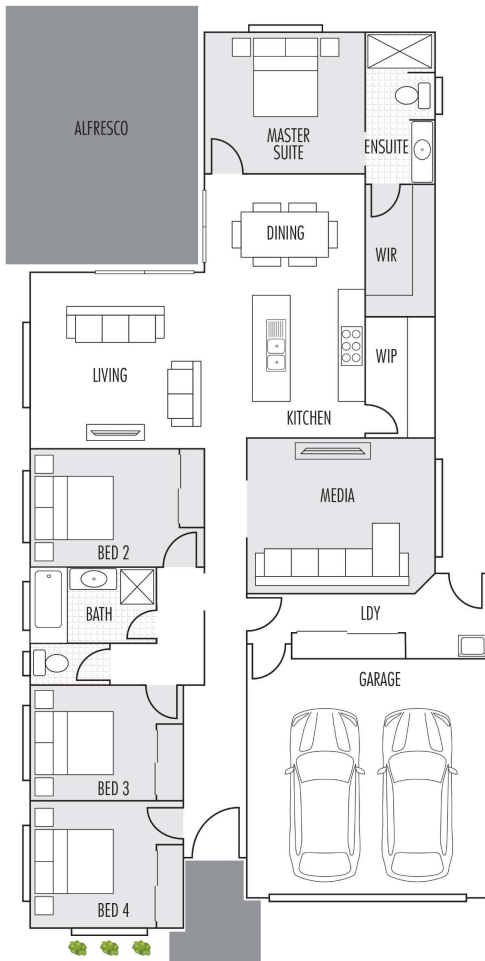




**Brown 224 sqm**

**House Price  
Build \$380,000.00**



**INCLUSIONS:**

**ALL INCLUSIVE PRICE – Full Turnkey**

- ✓ Carpet to bedroom and 450x450 ceramic tiles to main floors and wet areas
- ✓ 7mm grilled barrier screens to all external doors & windows with vertical blinds to all windows and sliding doors (excludes wet areas, laundry and garage)
- ✓ Euro 90cm Appliances - Dishwasher, Oven, Cook top & Range hood
- ✓ Quality fixtures & fittings, downlights and ceiling fans throughout
- ✓ 2.5hp Reverse cycle air conditioner to main living area
- ✓ 1hp Reverse cycle air conditioner to master bedroom
- ✓ Landscaping including gardens, plants and turf
- ✓ Std 1.8m high timber fencing to side and rear with returns to house and single gate provided for rear access
- ✓ Driveway, porch and alfresco finish in exposed aggregate
- ✓ Letterbox, TV Antenna and Clothesline
- ✓ All variations prior to construction at cost price
- ✓ Flexibility in our designs at no charge
- ✓ **Colorbond roof**
- ✓ **Front facade rendered; balance face brick**
- ✓ **2590mm Ceiling height**
- ✓ **Std 20mm stone bench tops to kitchen, scul. & vanities**
- ✓ **This price may need to be review .**

**Please note:** \*\* the floor plan depicted in this brochure is for conceptual purposes only, finishes will be confirmed upon completion of specifications within the building contract \*\* Subject to Council conditions and approval \*\* Facade for illustration purposes only - changes may need to be done to match floor plan \*\* Landscaping not as per artist impression \*\* This price is dependant on siting, retaining required and condition of block Universal Builders Pty Ltd Trading as Pathway Homes. ABN 97653726982. QBCC License 15281292

**Contact: 0424 306 379 hayley@visionhomesqld.com.au**