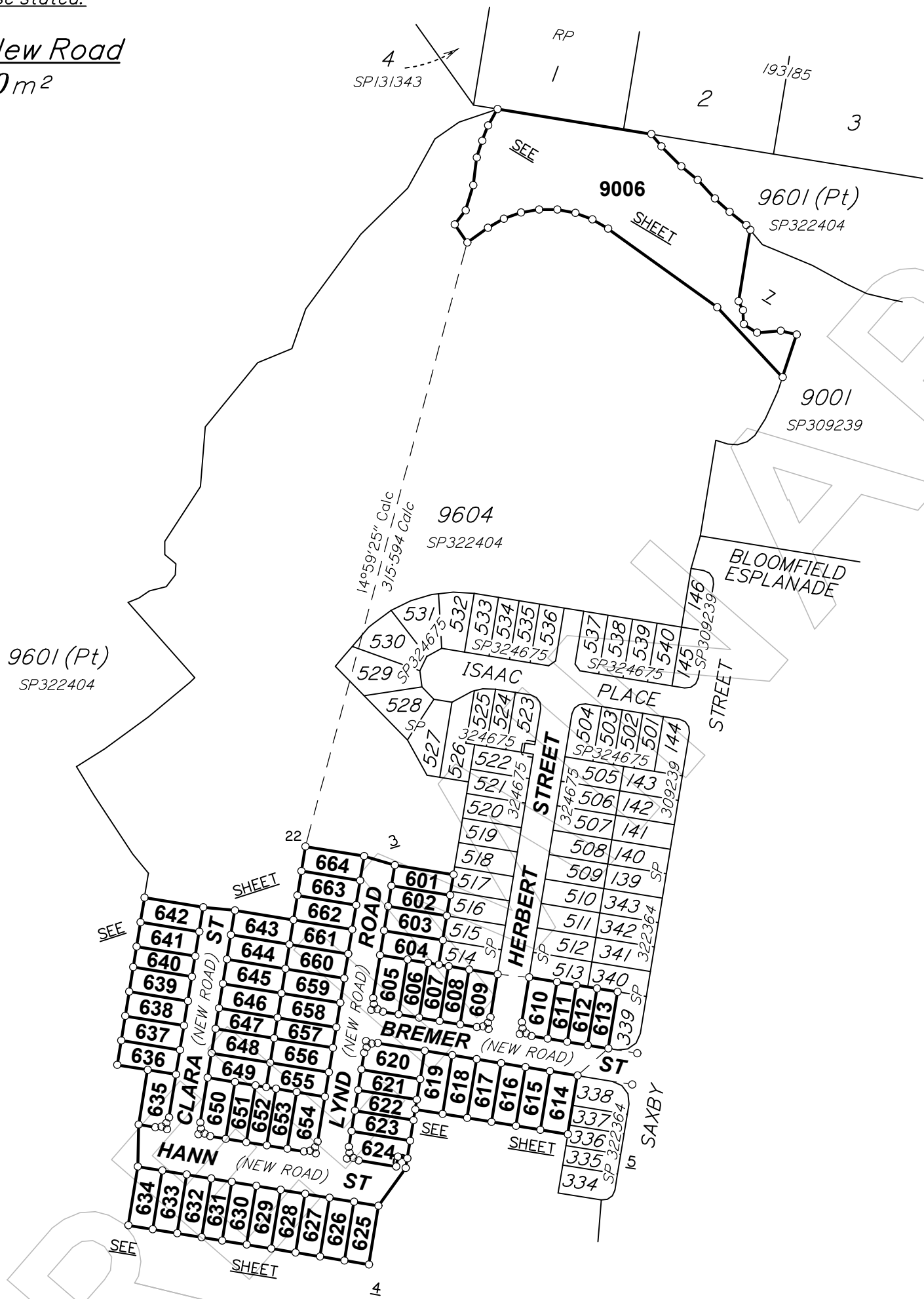


Original information compiled from
SP322404 in the Department of Resources.

Peg placed at all new corners
unless otherwise stated.

Area of New Road
9350 m²

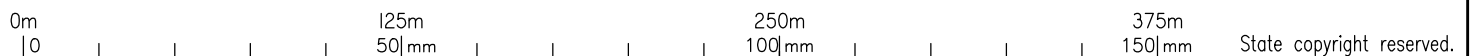


MGA COORDINATES GDA-2020

STATION	EAST	NORTH	ZONE	P.U.	LINEAGE	METHOD	REMARKS

PRELIMINARY STATUS

ALL DIMENSIONS AND AREAS ON THIS PLAN ARE SUBJECT TO SURVEY AND REQUIREMENTS FOR LODGEMENT OF SURVEY PLANS IN THE DEPARTMENT OF RESOURCES.



**Plan of Lots 601-664 & 9006 and
Easement C in Lot 624**

Cancelling Lot 9606 on SP322404

LOCAL GOVERNMENT: LOGAN C.C. LOCALITY: SOUTH MACLEAN

Meridian: MGA (Zone 56) vide CORS

Survey Records: No

Scale: **1:2500**
Format: **STANDARD**

SP324720

BRSS7455-006-2-2 SP324720

**WARNING : Folded or Mutilated Plans will not be accepted.
Plans may be rolled.
Information may not be placed in the outer margins.**

(Dealing No.)

4. Lodged by

(Include address, phone number, email, reference, and Lodger Code)

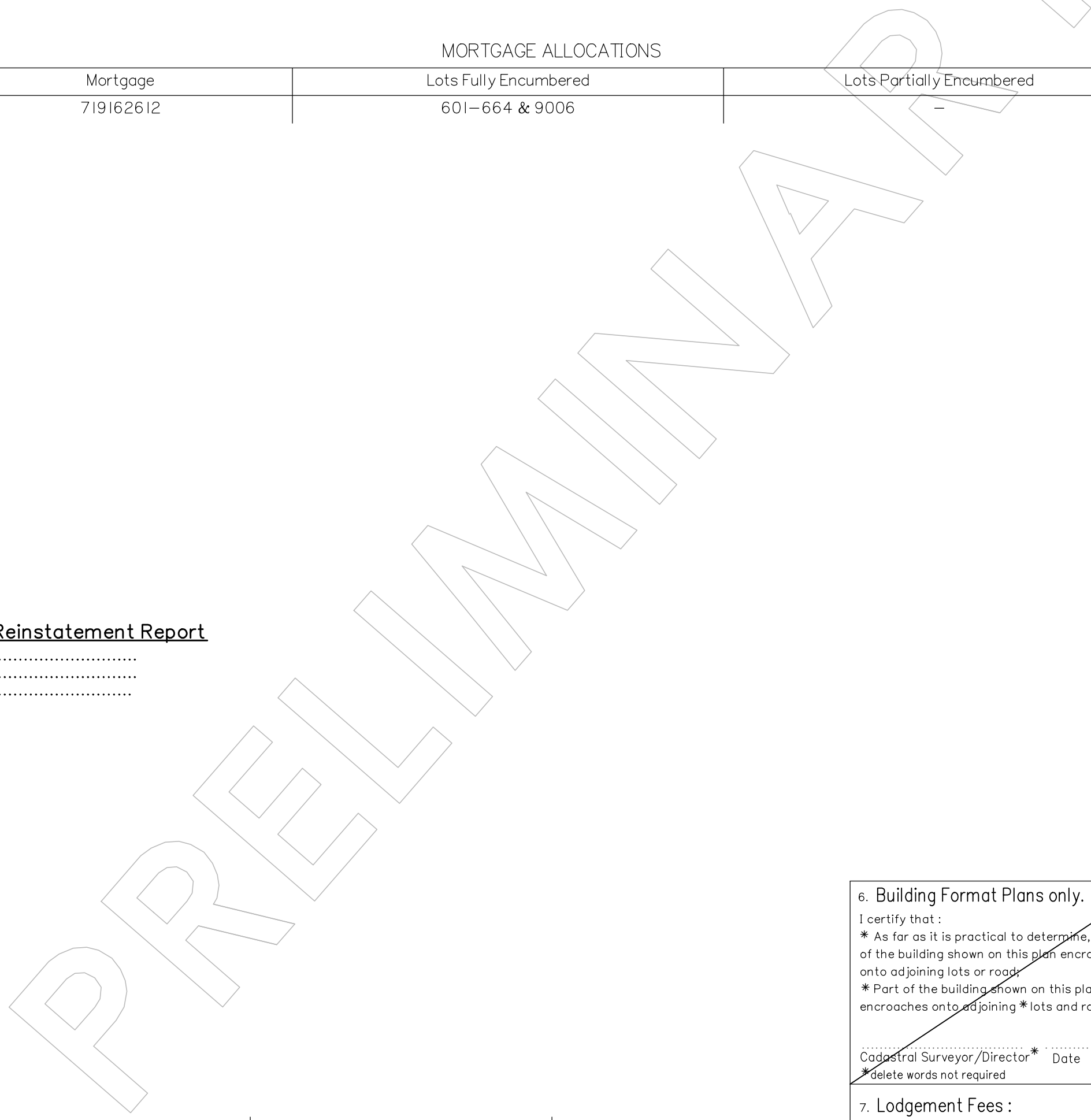
I. Existing		Created		
Title Reference	Description	New Lots	Road	Secondary Interests
51248085	Lot 9606 on SP322404	601-664 & 9006	New Rd	Emt C

MORTGAGE ALLOCATIONS

Mortgage	Lots Fully Encumbered	Lots Partially Encumbered
719162612	601-664 & 9006	-

Reinstatement Report

.....
.....
.....



601-664 & 9006	Por 303
Lots	Orig

2. Orig Grant Allocation :

3. References :
Dept File :
Local Govt :
Surveyor : BRSS7455.006

5. Passed & Endorsed :

By: LandPartners Pty Ltd
Date :
Signed :
Designation : Liaison Officer

6. Building Format Plans only.
I certify that :
* As far as it is practical to determine, no part of the building shown on this plan encroaches onto adjoining lots or road;
* Part of the building shown on this plan encroaches onto adjoining * lots and road
.....
Cadastral Surveyor/Director* Date
*delete words not required

7. Lodgement Fees :
Survey Deposit \$
Lodgement \$
.....New Titles \$
Photocopy \$
Postage \$
TOTAL \$

8. Insert Plan Number **SP324720**



SCALE 1:500

Insert Plan Number
SP324720

State copyright reserved

9601 (Pt)
SP322404

9604
SP322404

635
15.5
14.5
279°15'
30.0
12.5
375m²
636
30.0
99°15'
12.5
375m²
637
30.0
99°15'
12.5
375m²
638
30.0
99°15'
12.5
375m²
639
30.0
99°15'
12.5
375m²
640
10.5
315m²
641
30.0
99°15'
12.5
375m²
642
30.0
99°15'
12.5
375m²

STREET

CLARA

(NEW ROAD)

LYND

ROAD

BREMER STREET
(NEW ROAD)

(18-19)
9°15'

(107.5)
(20-34a)

(189°15')
(20-34)

(33b-21)
(108.5)

(36-22)
9°15'

(33b-21)
(108.5)

(146.0)
(23-32a)

(17.088)
258°41'40"

(26a-24)
(68.0)

(31-24)
9°15'

(279°15')
(3-25)

(189°15')
(1-2)

(189°15')
(1-2)

(189°15')
(1-2)

(189°15')
(1-2)

(189°15')
(1-2)

(189°15')
(1-2)

(189°15')
(1-2)

(189°15')
(1-2)

(189°15')
(1-2)

(189°15')
(1-2)

(189°15')
(1-2)

(189°15')
(1-2)

(189°15')
(1-2)

(189°15')
(1-2)

(189°15')
(1-2)

(189°15')
(1-2)

(189°15')
(1-2)

(189°15')
(1-2)

(189°15')
(1-2)

(189°15')
(1-2)

(189°15')
(1-2)

(189°15')
(1-2)

(189°15')
(1-2)

(189°15')
(1-2)

(189°15')
(1-2)

(189°15')
(1-2)

(189°15')
(1-2)

(189°15')
(1-2)

(189°15')
(1-2)

(189°15')
(1-2)

(189°15')
(1-2)

(189°15')
(1-2)

(189°15')
(1-2)

(189°15')
(1-2)

(189°15')
(1-2)

(189°15')
(1-2)

(189°15')
(1-2)

(189°15')
(1-2)

(189°15')
(1-2)

(189°15')
(1-2)

(189°15')
(1-2)

(189°15')
(1-2)

(189°15')
(1-2)

(189°15')
(1-2)

(189°15')
(1-2)

(189°15')
(1-2)

(189°15')
(1-2)

(189°15')
(1-2)

(189°15')
(1-2)

(189°15')
(1-2)

(189°15')
(1-2)

(189°15')
(1-2)

(189°15')
(1-2)

(189°15')
(1-2)

(189°15')
(1-2)

(189°15')
(1-2)

(189°15')
(1-2)

(189°15')
(1-2)

(189°15')
(1-2)

(189°15')
(1-2)

(189°15')
(1-2)

(189°15')
(1-2)

(189°15')
(1-2)

(189°15')
(1-2)

(189°15')
(1-2)

(189°15')
(1-2)

(189°15')
(1-2)

(189°15')
(1-2)

(189°15')
(1-2)

(189°15')
(1-2)

(189°15')
(1-2)

(189°15')
(1-2)

(189°15')
(1-2)

(189°15')
(1-2)

(189°15')
(1-2)

(189°15')
(1-2)

(189°15')
(1-2)

(189°15')
(1-2)

(189°15')
(1-2)

(189°15')
(1-2)

(189°15')
(1-2)

(189°15')
(1-2)

(189°15')
(1-2)

(189°15')
(1-2)

(189°15')
(1-2)

(189°15')
(1-2)

(189°15')
(1-2)

(189°15')
(1-2)

(189°15')
(1-2)

(189°15')
(1-2)

(189°15')
(1-2)

(189°15')
(1-2)

(189°15')
(1-2)

(189°15')
(1-2)

(189°15')
(1-2)

(189°15')
(1-2)

(189°15')
(1-2)

(189°15')
(1-2)

(189°15')
(1-2)

(189°15')
(1-2)

(189°15')
(1-2)

(189°15')
(1-2)

(189°15')
(1-2)

(189°15')
(1-2)

(189°15')
(1-2)

(189°15')
(1-2)

(189°15')
(1-2)

(189°15')
(1-2)

(189°15')
(1-2)

(189°15')
(1-2)

(189°15')
(1-2)

(189°15')
(1-2)

(189°15')
(1-2)

(189°15')
(1-2)

(189°15')
(1-2)

(189°15')
(1-2)

(189°15')
(1-2)

(189°15')
(1-2)

(189°15')
(1-2)

(189°15')
(1-2)

(189°15')
(1-2)

(189°15')
(1-2)

(189°15')
(1-2)

(189°15')
(1-2)

(189°15')
(1-2)

(189°15')
(1-2)

(189°15')
(1-2)

(189°15')
(1-2)

(189°15')
(1-2)

(189°15')
(1-2)

(189°15')
(1-2)

(189°15')
(1-2)

(189°15')
(1-2)

(189°15')
(1-2)

(189°15')
(1-2)

(189°15')
(1-2)

(189°15')
(1-2)

(189°15')
(1-2)

(189°15')
(1-2)

(189°15')
(1-2)

(189°15')
(1-2)

(189°15')
(1-2)

(189°15')
(1-2)

(189°15')
(1-2)

(189°15')
(1-2)

(189°15')
(1-2)

(189°15')
(1-2)

(189°15')
(1-2)

(189°15')
(1-2)

(189°15')
(1-2)

(189°15')
(1-2)

(189°15')
(1-2)

(189°15')
(1-2)

(189°15')
(1-2)

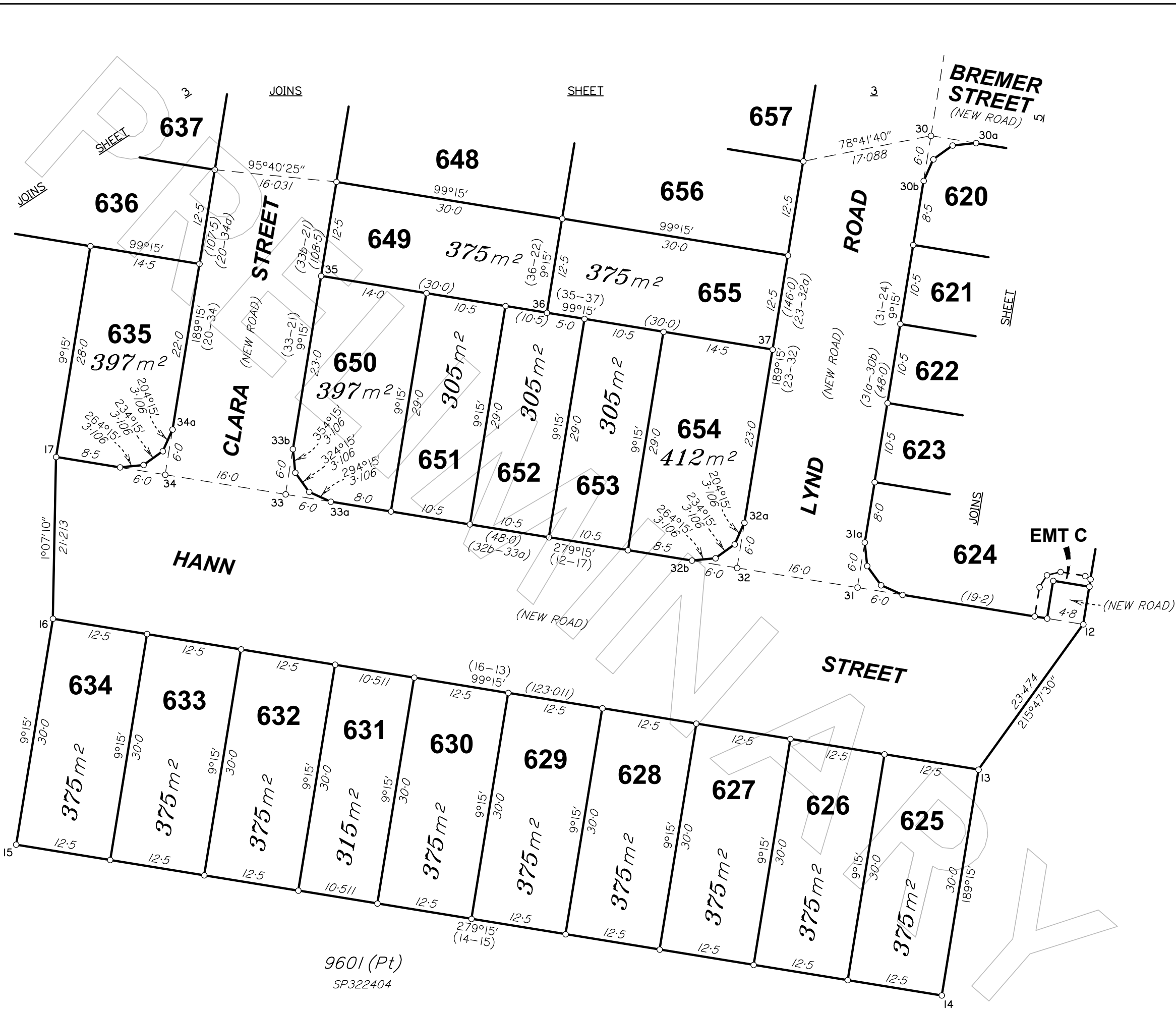
(189°15')
(1-2)

(189°15')
(1-2)

(189°15')
(1-2)

(189°15')
(1-2)

(189°15')
(1-2)



0m
25m
50m
75m
100m
150m

SCALE 1:500

Insert
Plan
Number
SP324720

State copyright reserved



0m
25m
50m
100m
150m
200m

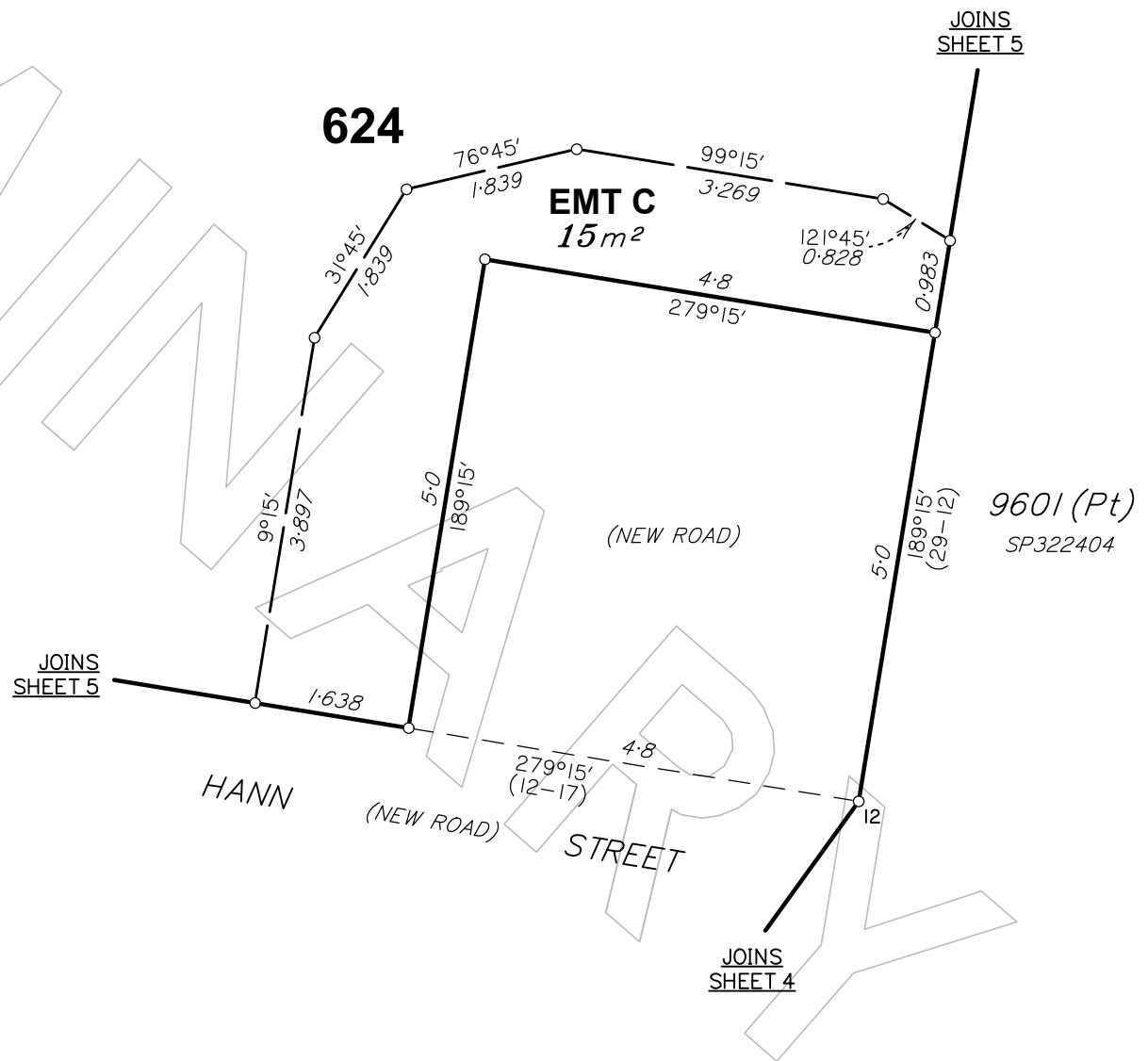
SCALE 1:500

Insert
Plan
Number
SP324720

State copyright reserved



DIAGRAM
SCALE 1 : 75



REFERENCE MARKS

STN	TO	ORIGIN	BEARING	DIST

0m
3.75m
50mm
7.5m
100mm
11.25m
150mm

SCALE 1:75

Insert
Plan
Number

SP324720

State copyright reserved

